



FLA LAW

Vol. 3, No. 31 June 5, 2000



University of Florida Fredric G. Levin College of Law Newsletter

INSIDE THIS ISSUE

IN STRIDE

FACULTY & STAFF NEWS

SCHOLARSHIP SPOTLIGHT

COLLEGE CALENDAR



FLA•LAW is funded by alumni contributions through the University of Florida Law Center Association Inc. and published to inform and unite the law school community.

Submissions must be in electronic format (e-mail or PC-formatted disk using WordPerfect or Word) and include the author's name and contact information.

Deadline: Submit entries by **10 a.m. Tuesday for the next week's newsletter** to the Communications Office, 288 Holland Hall, or flalaw@law.ufl.edu.

Editor: Debra Amirin.

Note: Submissions to the student newsletter, **THE DOCKET**, go to the John Marshall Bar Association.

Spring class placement nears 80 percent

"At graduation" increase due to student efforts, Career Services programs

Placement at graduation for the law school's Spring 2000 class is 78 percent — the best in many years, and a rate equivalent to other top tier law schools. The number is expected to further increase once remaining job-seekers pass the bar exam.

The law school's placement "at graduation" rate has steadily increased over the past four years. Students are considered "placed" if they have job offers at graduation, are planning to go on to LL.M. programs, or are not currently seeking employment.

The steady increase in the rate is attributed to a strong job market, student efforts, and strengthened programs from the Center for Career Services under the direction of Assistant Dean **Brian Lewis**.

"It's also a testimonial to how much employers value our students and to the strength of a UF law degree," said Lewis.



Sasnett

Associate Dean for Student Affairs **Gail Sasnett** said, "Our students have worked very hard to improve their marketability and reach out to potential employers. Our Center for Career Services has also stepped up efforts to train students in effective job search techniques, help them gain job experience and develop contacts with law firms and other employers."

Career Service programs such as the award-winning Pro Bono Program and externships enable students to gain real-life experience they can put on their resumes, while workshops and seminars offer training in everything from resume writing to interview skills.

Only seven of 218 students in the Spring 2000 class have not been accounted for. It is vital students

respond to the Career Services survey after graduation, since placement rates play an important role in law school rankings.

For example, in recent *U.S. News & World Report* rankings of U.S. law schools, one of the categories shown for UF was a 48 percent placement rate — evidently an averaging by the magazine of Fall '97, and Spring/Summer '98 "at graduation" data. As a result, UF ranked 123 nationally in that category. In comparison, UF's current 78 percent "at graduation" rate would have put us at 32 — well in the top tier of public and private law schools.

And, using the same *USN&WR* rankings, UF's 78 percent compared most favorably to UCLA's 80 percent; Univ. of Iowa, 76; Univ. of North Carolina – Chapel Hill, 74; Univ. of Minnesota – Twin Cities, 73; Univ. of Wisconsin – Madison, 67; Univ. of Kansas, 61; Ohio State Univ., 58; Univ. of Miami, 53; and Florida State Univ., 50.

ANNOUNCEMENTS

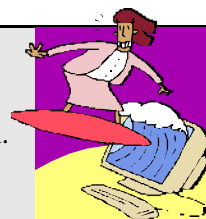
Sign up for Environmental & Land Use Law Certificate

Second- and third-semester students interested in careers in environmental or land use law
(Continued on page 2)

Web surfing?

Get a jump start on finding a job after graduation. We can help you locate pro bono and externship opportunities, define your career choices and hook up with employers. Click "Career Services" at:

www.law.ufl.edu



(Continued from page 1)

should sign up now for the Certificate Program to receive the most benefits. After applying to the program, students receive individualized academic guidance, informal career mentoring, and regular information about course offerings, paid and unpaid job opportunities and extra-curricular events. For an application: **Marla Wolfe**, 319 Holland Hall; for information: Environmental and Land Use Law Program Director **Alyson Flournoy**, flournoy@law.ufl.edu, 392.2211.

College honors Cuban-American attorney as part of successful Americas conference

The law school honored noted Cuban-born fourth generation attorney **Raul E. Valdes-Fauli** for his professional and public service accomplishments in the field of law in two countries during a May 25 dinner celebration.

The dinner was held the night before the college's conference on "Legal and

Policy Issues in the Americas," coordinated by the Center for Governmental Responsibility. The conference included presentations on trade, judicial reform, and legal education, and featured U.S. Envoy to Latin America **Buddy MacKay**; Florida Secretary of State **Katherine Harris**; Columbian Ambassador to the U.S. His Excellency **Luis Alberto Moreno**; and leading faculty and practitioners from U.S., Mexico, Costa Rica and Brazil. Originally limited to 50 participants, nearly 80 attended.

Educated in Cuba and at UF, Valdes-Fauli was one of more than 300 former Cuban lawyers forced from their homeland by Fidel Castro who applied in 1973 for a special two-year course of study at UF that qualified them for Florida Bar examinations.

Valdes-Fauli was admitted to The Florida Bar in 1975, and is now Of Counsel to the Miami office of Gunster, Yoakley & Stewart, P.A. He has practiced civil, corporate and real estate law for more than 20 years, and counsels Latin American clients on the differences in American and Cuban legislation. He is involved in numerous charity, religious

and civic activities in Miami-Dade County. His children continue the family's commitment to community leadership and professional accomplishment:

- Son **Raul J.** is an attorney and partner at Steel Hector & Davis in Miami, mayor of Coral Gables, and chairman of Eastern National Bank.
- Son **Gonzalo** is CEO, group chief executive for Latin America with Barclays Bank in Miami, and on the boards of Knight-Ridder and University of Miami.
- Son **Jose** is president and CEO of Colonial Bank's South Florida region, president of the Florida Grand Opera board, and a member of the Mercy Hospital board.
- Daughter **Teresa Valdes-Fauli Weintraub** is an attorney, CEO of Fiduciary Trust International in Miami, co-chairs the Miami-Dade County Leave a Legacy Project, and leads or belongs to six other charity groups.

There will be a sixth generation of Valdes-Fauli attorneys as well. Raul J.'s daughter and Raul E.'s granddaughter, **Mariana Margarita**, graduated from the Levin College of Law in May.



• IN STRIDE •

Summer classes

BY RESOURCE COUNSELOR RANDY PATTON

Students who began attending law school in the spring must attend classes in the summer as their second semester. Other upper-class students choose

to take coursework during the summer, and another hundred or so enroll in a variety of summer abroad programs.

Many students find the atmosphere much more relaxed during the summer. There are only about 200 students on the law school campus, as opposed to the normal 1,200. Many faculty and staff members take vacation time. The library is not nearly as busy, and parking spaces are much easier to find. It's a great time for newer students to become familiar with the staff in the Student Affairs Office, and the Center for Career Services will be inviting all second-semester students to meet with a career professional during this slower-paced season.

Of course, summer classes also can be more intense due to the compressed time-frame available, and it is important to keep current with your reading and studying, because the summer term will be over before you know it.

As your resource counselor, I am available Monday, Tuesday and Thursday afternoons during the summer to assist you with any difficulties that interfere with your learning and personal experiences. My office is in the Career Services suite in Bruton-Geer Hall, and I can be reached at 392.7044 or patton@law.ufl.edu.

New student lockers

In the last month, the law school has installed 936 new lockers for student use. The last 336 were installed two weeks ago, providing a fresh new (and Gator blue) look to the second floor concourse area. JMBA will again be in charge of assigning lockers in the fall.

Smoking area created, input solicited

The law school has created a smoking area for students, faculty and staff at the northeast corner of Holland Hall, by the kiosk. Palms, benches and ashtrays have been provided to make the area more comfortable.

The law school plans to create additional areas for smokers in the future, and would appreciate your input. Send suggestions to Administrative Services Coordinator **Martina Pelley** at Pelley@law.ufl.edu, 392.9238.

First Estates & Trusts Practice Certificate awarded in May

Beating the odds, UF law student Jason Guild (below) graduated in Spring 2000 with the first Certificate in Estates and Trusts Practice, a mere two semesters after the program was inaugurated.

For information on the certificate program: Estates and Trusts Practice Certificate Program Director Douglas Miller, Miller@law.ufl.edu, 392.2224.



"I'm pleased I could take advantage of the college's new Certificate in Estates and Trusts Practice. Since the certificate has distinct, additional requirements over and beyond those of the J.D., the process of earning it allowed me to learn more about an area of the law of particular interest to me. Having the certificate on my resume will help me demonstrate my interest and knowledge in the area to potential employers, which will certainly improve my overall marketability."

— Jason Guild, Class of 2000

FACULTY & STAFF NEWS

Lewis to development

Center for Career Services Assistant Dean Brian Lewis is leaving the law school to become Associate Director of Development for UF's Warrington School of Business. In the two years he
(Continued on page 4)

• SPOTLIGHT ON SCHOLARSHIP •

Professors Mashburn, Nunn, and Slobogin authors in AALS symposium issue

In the past few years, the legal profession and legal academia have placed increasing emphasis on professional ethics. Representative of that trend, the American Association of Law Schools in January sponsored a special half-day panel discussion on criminal justice ethics involving more than 15 law professors, and *Fordham Law Review* devoted an entire volume to publication of the resulting papers. Three Levin College of Law faculty members were featured in the April 2000 volume of the *Review*.

Professor **Christopher Slobogin** participated in the planning of the symposium and, with Professor **Amy Mashburn**, co-authored "The Criminal Defense Lawyer's Fiduciary Duty to Clients with Mental Disability." Using the Unabomber case and other recent cases as springboards, Professors Slobogin and Mashburn explored the difficult ethical dilemmas faced by defense attorneys with mentally ill clients, such as Ted Kaczynski, who refused to go along with his attorneys' insanity defense strategy even though faced with capital charges stemming from bombs he sent through the mail.

An authority on Civil Procedure, Professional Responsibility and Administrative Law, Professor **Amy Mashburn** joined the UF faculty in 1990. She was formerly an associate with Dean, Mead, Egerton, Bloodworth, Capouano & Bozarth in Orlando.

Associate Dean for Law Center Affairs **Kenneth Nunn** wrote "The 'Darden Dilemma': Should African Americans Prosecute Crimes?" in the *Review*. Nunn is a published author and speaker on Criminal Law and Procedure, Race Relations, Civil Rights, Public Interest Law, Critical Race Theory, Legal Semiotics, Sociology of Law, and Law and Cultural Studies. He has served on the faculty of UF and Washington & Lee University; as an attorney with the D.C. Public Defender Service and the Southern Africa Project of the Lawyers Committee for Civil Rights Under Law; and as a Deputy Public Defender, San Francisco. He is working on a chapter for a book on police brutality and an article on racism for the *World Book Encyclopedia*, and will teach a course this summer on international criminal law for the UF Study Abroad Program at the University of Cape Town, South Africa.

Professor **Christopher Slobogin**, who holds the Stephen C. O'Connell Chair and is an Affiliate Professor of Psychiatry, is a prolific writer, frequent speaker at symposiums, universities and other prominent venues in this country and others in the areas of criminal and mental health law, and has been a visiting professor at USC, Virginia and other law schools. Since January, he has published the fourth edition of his treatise with Professor Charles Whitebread, *Criminal Procedure*, and articles in *California Criminal Law Review*, *Mental and Physical Disability Law Reporter*; and a symposium issue of *Psychology, Public Policy and Law*; and is now working on his book, *Minding Justice: Depriving People with Mental Disability of Life and Liberty*.

Note: Many Levin College of Law faculty are noted scholars and authors. For a more complete listing, see *Faculty & Staff News*; *University of Florida Lawyer* magazine; and the "Faculty" link on the college Web site. Faculty scholarship will be spotlighted in this space on a regular basis.



Mashburn



Nunn



Slobogin

(Continued from page 3)

has served, he has successfully worked to increase the college's placement at graduation and overall employment rates, and offer improved career guidance and other services to students.



Lewis friendly the students, faculty and staff have been. I wish everyone here much success in their future endeavors," said Lewis.

In the news

• Director of International Trade Programs **Stephen Powell** was interviewed by *Bloomberg News Service* for a story on the U.S. investigation of unfairly-traded apple juice imports from China, and impact of the WTO accession agreement negotiated with China on the ability of



Powell

the United States to protect U.S. industries against unfair business practices in China.

- Professor **Christopher Slobogin** was quoted in an article by Mark O'Keefe on police integrity published on MSNBC, one of the country's largest and most popular Web sites. The article went to 22 Newhouse News Service papers and other media. His paper, "Mental Illness and the Death Penalty," was recently listed in the "Top 10" download list on Social Science Research Network Electronic Library.
- Associate Dean **Kenneth Nunn** co-hosted "Faces of Race 2000" on WUFT TV. The show invited the public to discuss race and racial issues, and featured a 30-minute segment by Professor **Sharon Rush**, who discussed, among other topics, the legality of the One Florida initiative.
- Professor **Lyrissa Lidsky** was quoted extensively in APB News, *Miami Herald* and *St. Petersburg Times* regarding Internet access and the ACLU.



Lidsky

Hinson to UF Admissions

Lena Hinson, assistant editor of *Florida Tax Review* and a member of the Graduate Tax Program staff for 13 years, has said farewell to the law school and accepted a position with UF's Graduate Admissions Office in Criser Hall.

• CALENDAR •

For more events:
www.law.ufl.edu/calendar

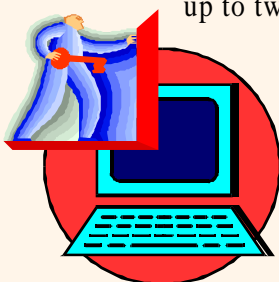
July

- 4 • Independence Day Holiday
- 5 • Florida Board of Bar Examiners "180 Day" registration deadline for Spring 2000 entering class
- 6 • Tuesday classes meet, Thursday classes cancelled
- 7 • Summer classes end
• Last day to withdraw from course by petition without failing grade
- 8 • Exams begin
- 15 • Exams end
- 18 • Senior grades due
- 21 • Florida Board of Bar Examiners "195 Day" registration deadline for Spring 2000 entering class

Need a roommate? We can help

The law school's Web-based roommate referral system is free, private and secure

The Office of Admissions, with assistance from the law school student government association — the John Marshall Bar Association (JMBA) — has developed a private, secure Web-based roommate referral site exclusively for new and existing Levin College of Law students to assist them with finding roommates. The new system replaces a form- and paper-based referral system that took longer to fill out and up to two weeks to be checked out and posted — compared to today's quick 24-hour turnaround. One or more students have signed up for the service each day since it was put online May 15, and usage is expected to continue to increase.



To participate, just log on to:

www.law.ufl.edu/admissions

Click on "Housing"